

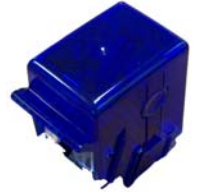
chica

ID CARD PRINTER



QUALITY – SPEED - RELIABILITY

Standard **USB - ETHERNET**



Detachable 100-card feeder



4-Led Panel

Target Markets

- Universities & Schools
- Healthcare
- Loyalty Programs
- Retailers
- Conferences & Trade Shows
- Transportation

Main Features

- Single-sided printing
- Color and Monochrome
- up to 150 cards/hour: color
- up to 1000 cards/hour monochrome
- Mag, Smart and RFID options
- Std. Ethernet and USB connection
- MatiCard Software included
- 2 years warranty



FLEXIBILITY

Whether you want to print monochrome or colour, automatic card feeding, multiple card stock, no encoding or encoding mag, contact smart, contactless/RFID Mifare, a stand alone printer or a network printer – Choose Chica⁴, it's got it all!

QUALITY YOU CAN RELY ON!

With over 8 years of proven reliability, the Chica⁴ just works and works and works!

Whether you need employee ID, access cards, student or campus ID, membership, loyalty, gift or event cards the compact Chica⁴ is ready to produce the best quality anytime, anywhere when you want.



User Benefits

Chica⁴ is easy to use, stylish and fast

New Windows® driver with speedy setup and enhanced user interface.
 New 'Print manager' for enhanced real-time alerts.
 Precise clamshell cover 4 easy ribbon change, print head replacement, cleaning, and card thickness adjustment.
 Detachable 'clean' card feeder 4 different pre-printed/thickness card stock.

Chica⁴ is easy to upgrade and customise

Ports 4 easy connectivity: IP/ Ethernet, USB standard (unit shipped with cable),
 Elegant card feeder 4 easy over-the-counter instant issue.
 Range of technologies 4 easy combo read/encode: Magnetic Stripe ISO/JIS2, Smart Chip contact station, Contactless (ISO14443A) read/encode units.

Chica⁴ – 100x improved image resolution

New CPU and print head for outstanding graphics and image definition with colour profiling/ matching filter bringing screen colour to card..
 150 colour cards/hour - 1000 monochrome cards/hour = premium performance.
 16MB memory optimizes print file download
 SDK to enable custom application development.

Chica⁴ works out of the box!

Cables, consumables, software and a printer all in one box!
 Standard operating system support: Windows Vista, XP and 2003 (Drivers for Mac OS X and Linux are available)
 Card Designer software in the box, ready to go! Personalize and print direct from your data-file!
 The set up wizards lead the user step by step to a finished, printed card!

Chica⁴ works, and works, and works, and works...

High quality design
 High quality manufacturing technology
 High quality materials
 High quality assembly, fully tested and tuned prior to shipping.

Chica⁴ raises the bar for price v performance

Ready-to-use on your desktop as standard!
 Comprehensive range of quality consumables bring savings of up to 40%
 Monochrome print-ribbon saver increases productivity up to 300%



Technical Features

Print Method:

- Colour dye sublimation and monochrome thermal transfer

Printing Speed:

- Up to 150 cards/hour in colour (YMCKO)
- Up to 1000 cards/hour in monochrome (text only)

Resolution:

- 300 dpi near edge-to-edge

Card Types:

- PVC, Composite PVC, PET, ABS and special varnish
- Card Format: ISO CR-80; ISO 7810 (54 mm x 86 mm)

Card Thickness:

- From 0.25 mm to 1 mm

Card Feeder Capacity:

- 100 cards (0.76 mm- 30mil)
- 300 cards (0.25mm – 10 mil)

Card Output Hopper Capacity:

- 50 cards (0.76 mm- 30mil)
- 150 cards (0256 mm- 10mil)

Card Loading Modes:

- Automatic feeder

Ribbon Types:

- Monochrome ribbons: 1000 cards/roll
- 2 Panel black monochrome ribbon (KO): 500 cards/roll
- 5 Panel colour ribbon (YMCKO): 200 cards/roll
- Half-Panel colour ribbon (½YMCKO): 400 cards/roll

Special Ribbons:

- Varnish hologram ribbon: 350 cards/roll
- Scratch-off: up to 1000 cards/roll
- Black Wax monochrome ribbon (for ABS & special varnished plastic cards): < 600 cards/roll

Printer Dimensions:

- WxDxH: 235 x 394 x 194 mm

Printer Weight: 6 Kg

Communication Interface:

- USB (cable included)
- LAN - Ethernet
- 16 MB RAM
- 1 Button and 4 LED Panel

Software:

- Free Card Design Software for Windows® 2003/XP
- Printer Driver for Windows® 2003/XP and Vista

Options:

- Magnetic stripe encoding
- Smart Card Contact/Contactless Station
- 100 Card Additional Feeder

Environmental:

- Min/max operating temperatures: 15°C / 30° C
- Operating humidity: 20% to 65% non-condensing

Power Supply: 100~240 Volts AC, 50~60 Hertz

